

Dayton Southeast Weed and Seed Target Area

CRIME STATS FOR TARGET AREA

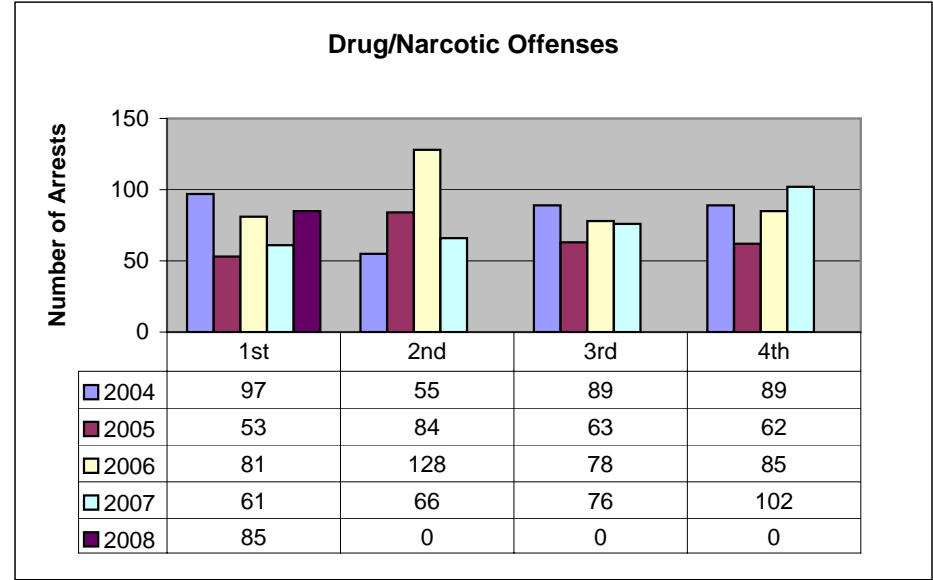
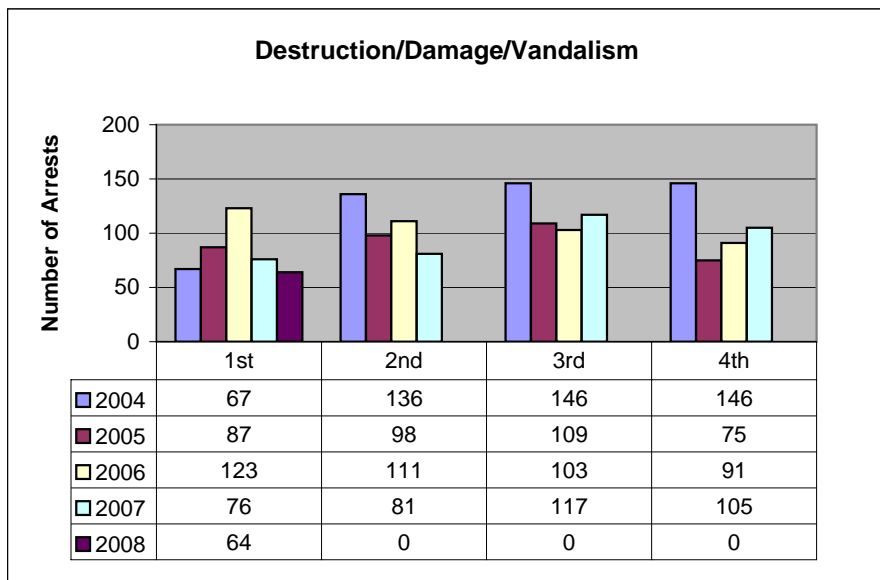
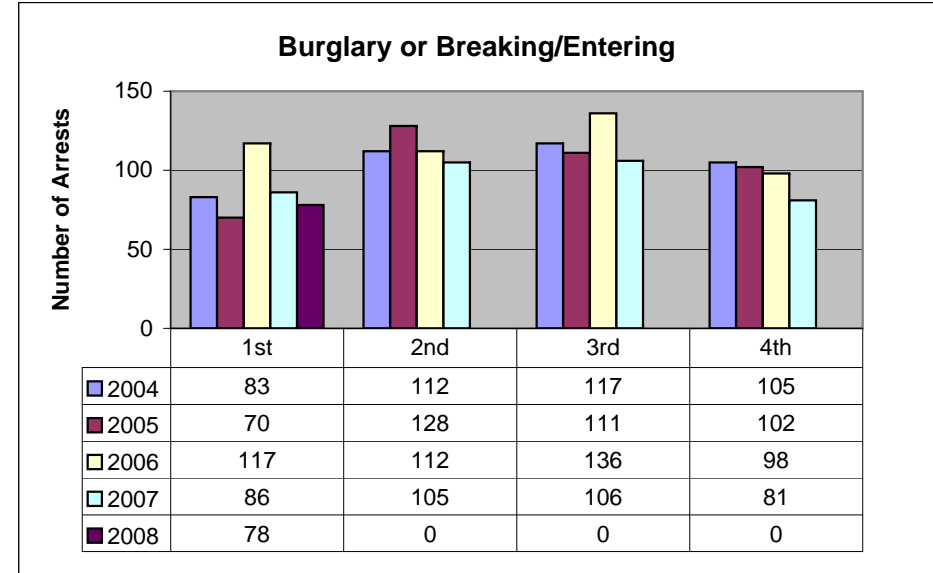
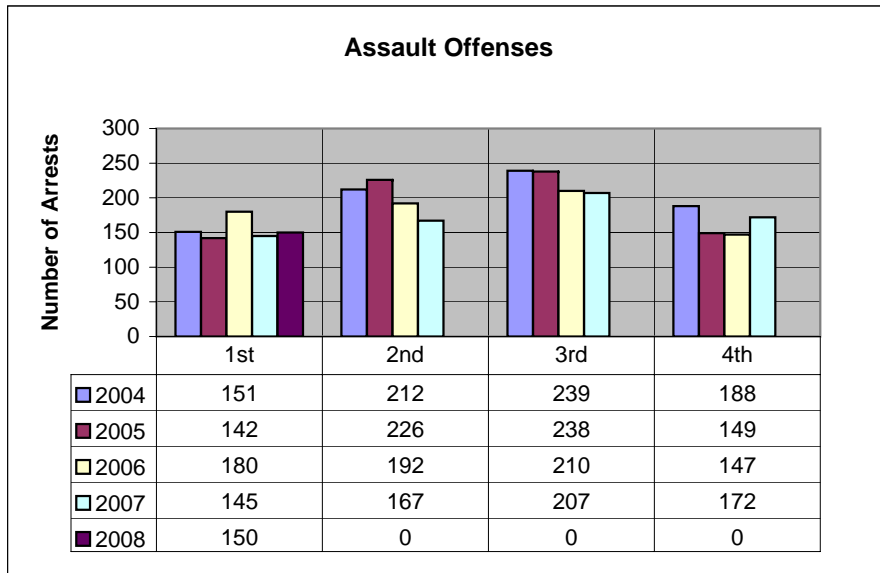
	<u>QTR</u>	<u>Assault Offenses</u>	<u>Burglary/ Breaking & Entering</u>	<u>Destruction/ Damage/ Vandalism</u>	<u>Drug/ Narcotic Offenses</u>	<u>Homicide/ Offenses</u>	<u>Larceny/ Theft Offenses</u>	<u>Motor Vehicle Theft</u>	<u>Prostitution Offenses</u>	<u>Robbery</u>	<u>Sex Offenses (Forcible)</u>	<u>Sex Offenses (Non-Forcible)</u>	<u>Stolen Property Offenses</u>
2004	1st	151	83	67	97	0	140	49	54	15	7	1	10
2004	2nd	212	112	136	55	0	207	40	75	20	6	2	6
2004	3rd	239	117	146	89	1	220	84	87	29	12	1	14
2004	4th	188	105	146	89	0	221	71	80	23	4	2	13
2005	1st	142	70	87	53	0	160	61	96	19	4	1	11
2005	2nd	226	128	98	84	0	167	50	90	18	8	0	14
2005	3rd	238	111	109	63	0	208	55	75	20	13	0	15
2005	4th	149	102	75	62	0	157	58	48	15	11	0	13
2006	1st	180	117	123	81	1	190	77	33	17	10	0	13
2006	2nd	192	112	111	128	1	204	71	48	22	9	0	10
2006	3rd	210	136	103	78	1	198	62	74	17	9	0	21
2006	4th	147	98	91	85	0	191	79	67	31	7	0	11
2007	1st	145	86	76	61	0	158	47	81	18	2	0	10
2007	2nd	167	105	81	66	1	174	40	51	11	3	1	14
2007	3rd	207	106	117	76	0	166	55	51	23	9	0	6
2007	4th	172	81	105	102	0	171	27	76	14	11	0	17
2008	1st	150	78	64	85	0	128	27	56	13	6	7	6
2008	2nd	0	0	0	0	0	0	0	0	0	0	0	0
2008	3rd	0	0	0	0	0	0	0	0	0	0	0	0
2008	4th	0	0	0	0	0	0	0	0	0	0	0	0

ANNUAL SUMMARY FOR TARGET AREA

	<u>Assaults</u>	<u>Burglary/ Breaking & Entering</u>	<u>Destruction/ Damage/ Vandalism</u>	<u>Drug/ Narcotic Offenses</u>	<u>Homicide/ Offenses</u>	<u>Larceny/ Theft Offenses</u>	<u>Motor Vehicle Theft</u>	<u>Prostitution Offenses</u>	<u>Robbery</u>	<u>Sex Offenses (Forcible)</u>	<u>Sex Offenses (Non-Forcible)</u>	<u>Stolen Property Offenses</u>
2004 TOTALS	790	417	495	330	1	788	244	296	87	29	6	43
2005 TOTALS	755	411	369	262	0	692	224	309	72	36	1	53
% CHANGE	-4%	-1%	-25%	-21%	-100%	-12%	-8%	4%	-17%	24%	-83%	23%
2006 TOTALS	729	463	428	372	3	783	289	222	87	35	0	55
% CHANGE	-3%	13%	16%	42%	na	13%	29%	-28%	21%	-3%	-100%	4%
2007 TOTALS	691	378	379	305	1	669	169	259	66	25	1	47
% CHANGE	-5%	-18%	-11%	-18%	-67%	-15%	-42%	17%	-24%	-29%	na	-15%
2008 TOTALS	150	78	64	85	0	128	27	56	13	6	7	6
% CHANGE	-78%	-79%	-83%	-72%	-100%	-81%	-84%	-78%	-80%	-76%	600%	-87%

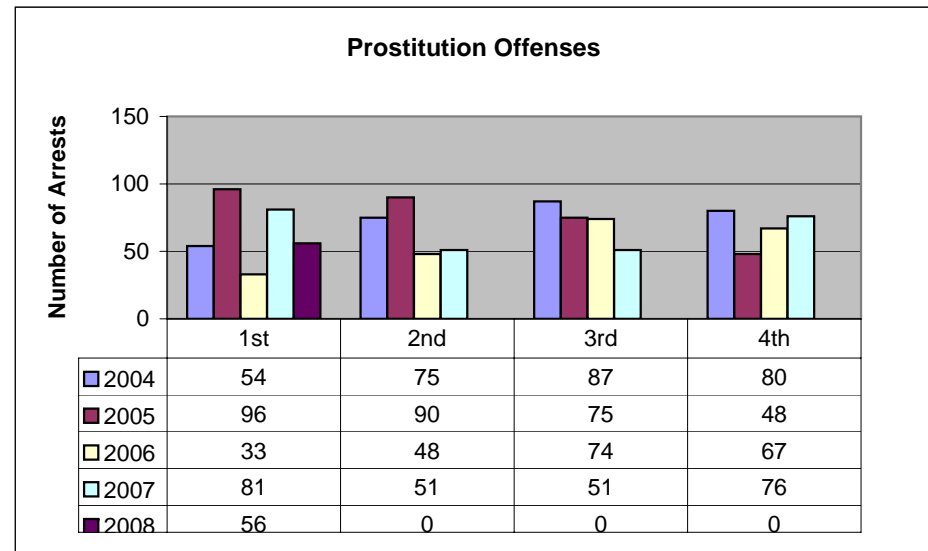
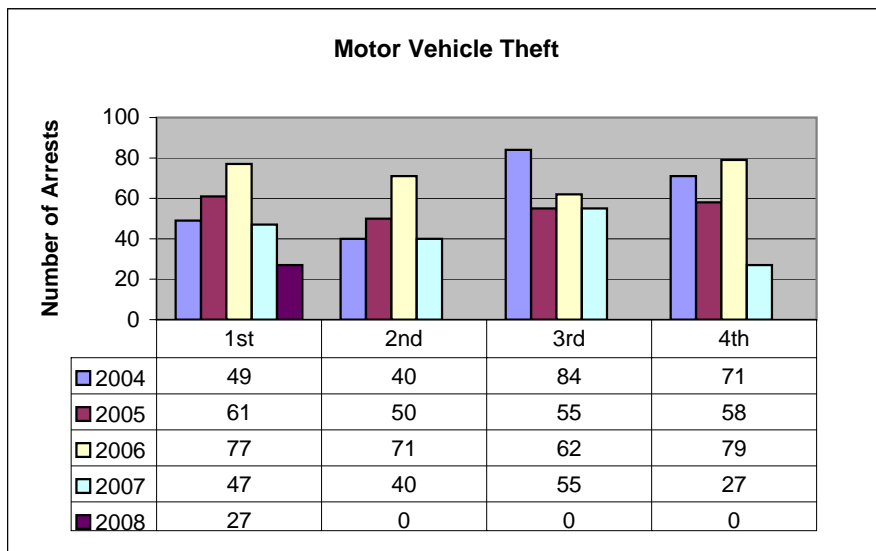
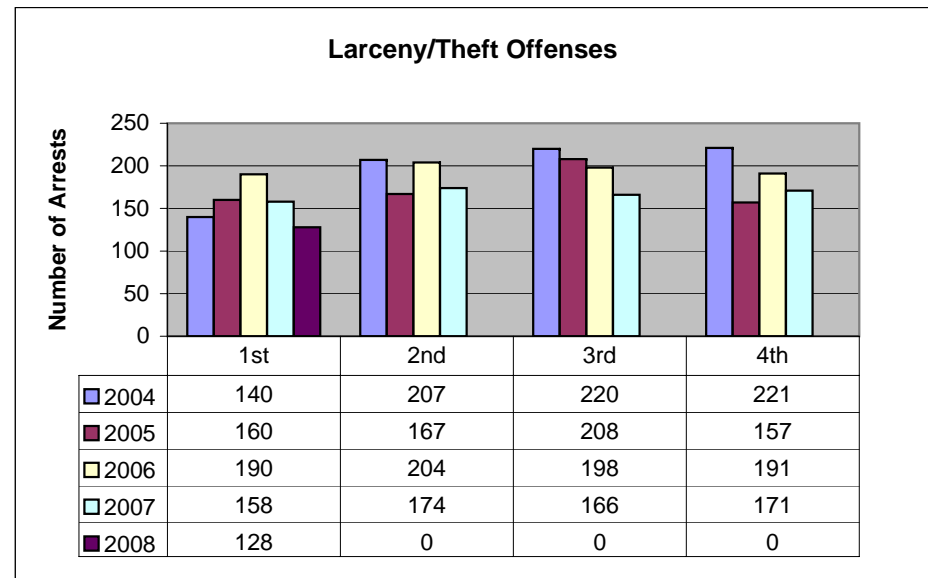
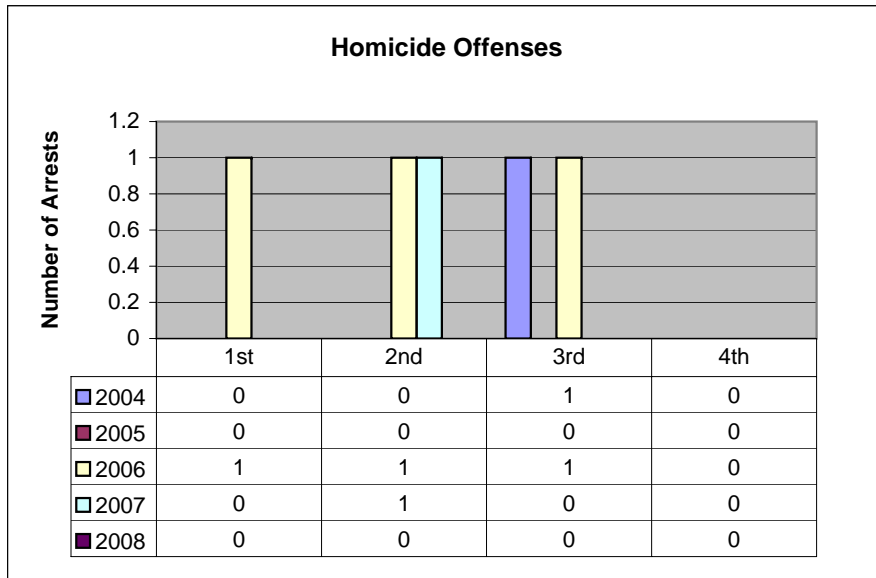
All data provided from NIBRS by Jonathan Day, Dayton Police Department Crime Analysis Unit, as of 1/4/2008

Dayton Southeast Weed and Seed Target Area Graphic Analysis by Quarter and Year



* ZERO "0" VALUES RESULT IN NO BARS DISPLAYED

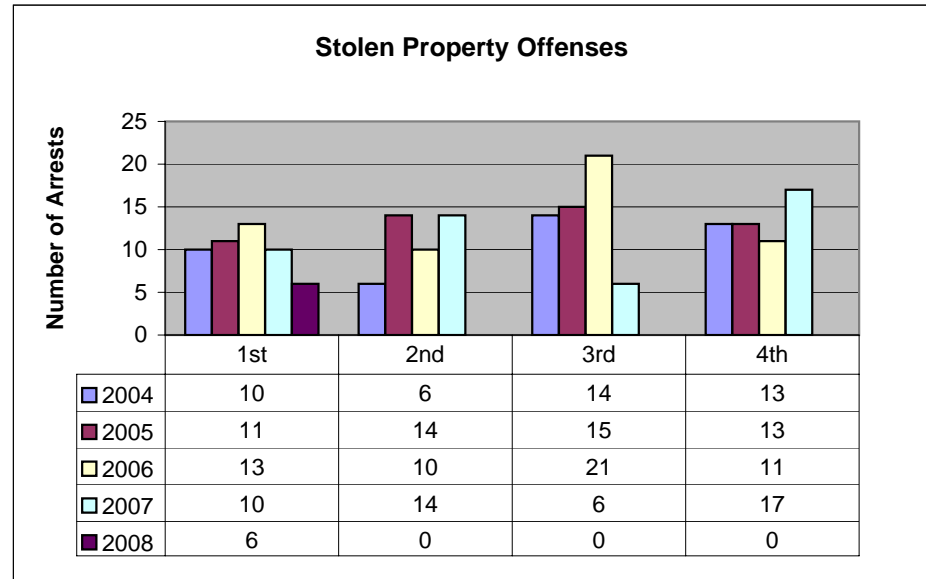
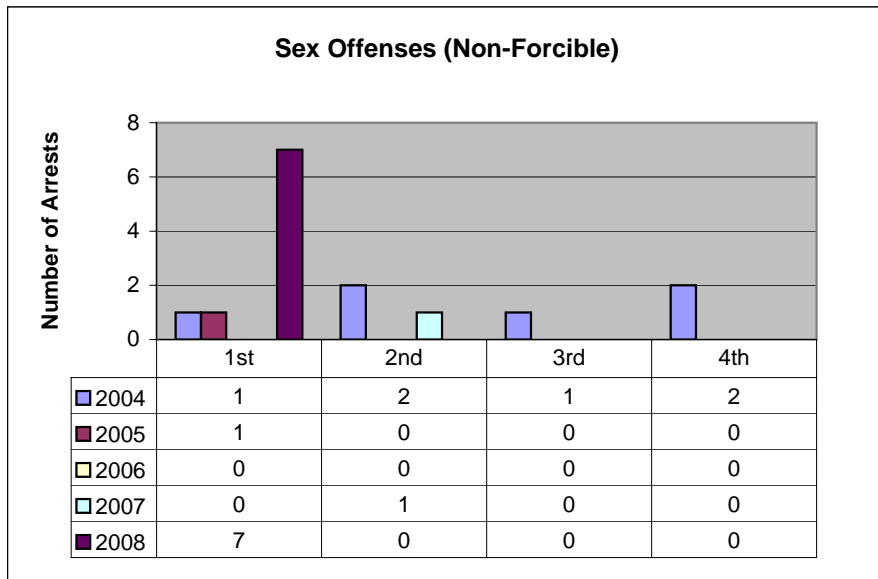
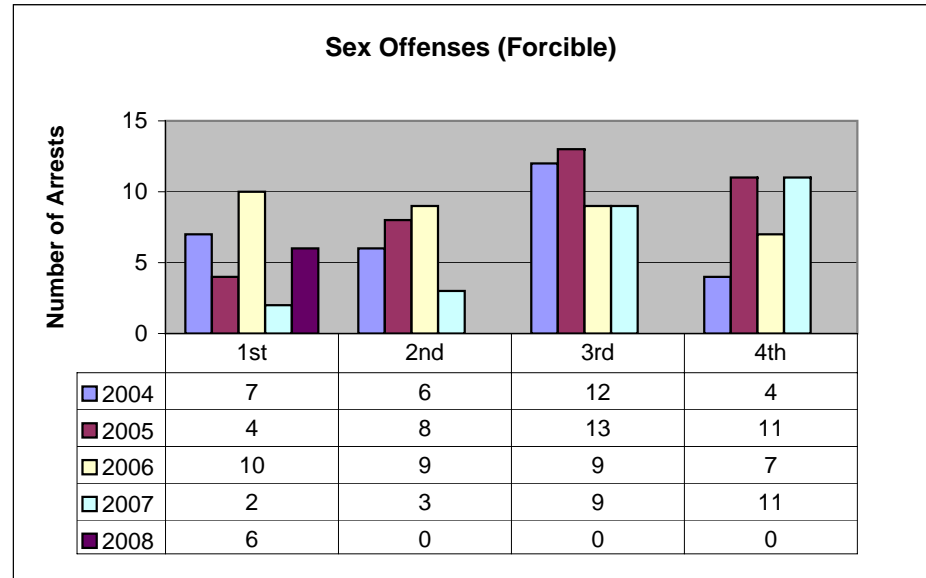
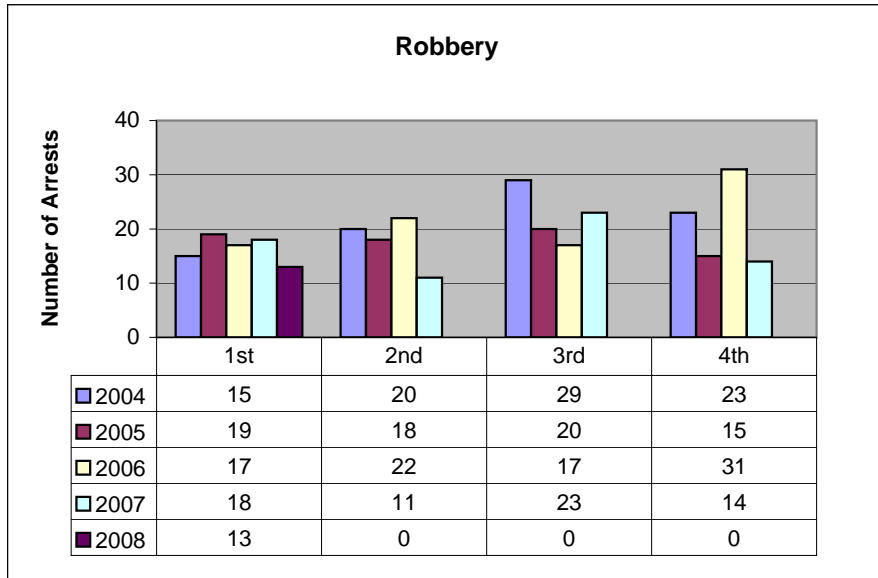
Dayton Southeast Weed and Seed Target Area Graphic Analysis by Quarter and Year



* ZERO "0" VALUES RESULT IN NO BARS DISPLAYED

Dayton Southeast Weed and Seed Target Area

Graphic Analysis by Quarter and Year



* ZERO "0" VALUES RESULT IN NO BARS DISPLAYED

CRIME STATS FOR SECTOR 166

	QTR	Assault Offenses	Burglary/ Breaking & Entering	Destruction/ Damage/ Vandalism	Drug/ Narcotic Offenses	Homicide/ Offenses	Larceny/ Theft Offenses	Motor Vehicle Theft	Prostitution Offenses	Robbery	Sex Offenses (Forcible)	Sex Offenses (Non-Forcible)	Stolen Property Offenses
2004	1st	2	1	1	3	0	11	4	2	0	0	0	2
2004	2nd	3	1	6	0	0	11	1	2	0	0	0	0
2004	3rd	3	6	5	1	0	7	8	4	0	0	0	1
2004	4th	5	2	10	3	0	21	3	2	1	0	0	1
2005	1st	2	2	1	2	0	10	1	0	0	0	0	0
2005	2nd	9	2	3	1	0	2	3	2	0	1	0	0
2005	3rd	3	3	3	0	0	5	2	2	0	0	0	0
2005	4th	5	2	3	2	0	11	5	0	0	0	0	2
2006	1st	3	3	2	1	0	9	9	0	0	0	0	0
2006	2nd	2	2	8	0	0	17	9	0	2	1	0	0
2006	3rd	4	5	7	1	0	12	3	2	0	0	0	1
2006	4th	4	4	4	1	0	9	9	2	0	0	0	1
2007	1st	2	4	5	0	0	15	5	2	0	0	0	0
2007	2nd	7	0	10	2	0	16	1	0	1	0	1	1
2007	3rd	0	2	7	1	0	11	6	2	0	0	0	0
2007	4th	1	1	6	1	0	8	1	4	0	0	0	1
2008	1st	4	1	6	2	0	6	1	0	0	0	0	0
2008	2nd												
2008	3rd												
2008	4th												

ANNUAL SUMMARY FOR SECTOR 166

	Assault Offenses	Burglary/ Breaking & Entering	Destruction/ Damage/ Vandalism	Drug/ Narcotic Offenses	Homicide/ Offenses	Larceny/ Theft Offenses	Motor Vehicle Theft	Prostitution Offenses	Robbery	Sex Offenses (Forcible)	Sex Offenses (Non-Forcible)	Stolen Property Offenses
2004 TOTALS	13	10	22	7	0	50	16	10	1	0	0	4
2005 TOTALS	19	9	10	5	0	28	11	4	0	1	0	2
% CHANGE	46%	-10%	-55%	-29%	na	-44%	-31%	-60%	-100%	na	na	-50%
2006 TOTALS	13	14	21	3	0	47	30	4	2	1	0	2
% CHANGE	-32%	56%	110%	-40%	na	68%	173%	0%	na	0%	na	0%
2007 TOTALS	10	7	28	4	0	50	13	8	1	0	1	2
% CHANGE	-23%	-50%	33%	33%	na	6%	-57%	100%	-50%	-100%	na	0%
2008 TOTALS	4	1	6	2	0	6	1	0	0	0	0	0
% CHANGE	-60%	-86%	-79%	-50%	na	-88%	-92%	-100%	-100%	na	-100%	-100%

All data provided from NIBRS by Jonathan Day, Dayton Police Department Crime Analysis Unit, as of 1/4/2008

CRIME STATS FOR SECTOR 230

	QTR	Assault Offenses	Burglary/ Breaking & Entering	Destruction/ Damage/ Vandalism	Drug/ Narcotic Offenses	Homicide/ Offenses	Larceny/ Theft Offenses	Motor Vehicle Theft	Prostitution Offenses	Robbery	Sex Offenses (Forcible)	Sex Offenses (Non-Forcible)	Stolen Property Offenses
2004	1st	0	1	1	3	0	2	0	0	0	0	0	0
2004	2nd	1	0	2	0	0	5	0	0	0	1	0	0
2004	3rd	3	0	3	1	0	7	2	3	0	0	0	2
2004	4th	0	0	2	2	0	1	0	0	1	0	1	1
2005	1st	2	0	0	1	0	0	0	0	0	0	0	0
2005	2nd	2	7	1	0	0	5	0	0	0	0	0	2
2005	3rd	0	0	6	2	0	9	1	3	0	0	0	0
2005	4th	1	1	0	0	0	2	0	0	0	0	0	0
2006	1st	0	1	1	0	0	1	0	0	0	0	0	2
2006	2nd	1	4	2	2	0	6	0	4	1	0	0	1
2006	3rd	0	3	2	5	0	4	0	0	0	0	0	2
2006	4th	0	0	2	1	0	2	1	0	0	0	0	2
2007	1st	1	0	1	0	0	1	0	0	0	0	0	0
2007	2nd	2	2	3	0	0	2	0	1	0	0	0	0
2007	3rd	0	3	2	0	0	4	0	0	1	0	0	0
2007	4th	1	1	0	0	0	2	0	0	0	1	0	2
2008	1st	1	1	0	0	0	1	0	0	0	0	3	0
2008	2nd												
2008	3rd												
2008	4th												

ANNUAL SUMMARY FOR SECTOR 230

	Assault Offenses	Burglary/ Breaking & Entering	Destruction/ Damage/ Vandalism	Drug/ Narcotic Offenses	Homicide/ Offenses	Larceny/ Theft Offenses	Motor Vehicle Theft	Prostitution Offenses	Robbery	Sex Offenses (Forcible)	Sex Offenses (Non-Forcible)	Stolen Property Offenses
2004 TOTALS	4	1	8	6	0	15	2	3	1	1	1	3
2005 TOTALS	5	8	7	3	0	16	1	3	0	0	0	2
% CHANGE	25%	700%	-13%	-50%	na	7%	-50%	0%	-100%	-100%	-100%	-33%
2006 TOTALS	1	8	7	8	0	13	1	4	1	0	0	7
% CHANGE	-80%	0%	0%	167%	na	-19%	0%	33%	na	na	na	250%
2007 TOTALS	4	6	6	0	0	9	0	1	1	1	0	2
% CHANGE	300%	-25%	-14%	-100%	na	-31%	-100%	-75%	0%	na	na	-71%
2008 TOTALS	1	1	0	0	0	1	0	0	0	0	3	0
% CHANGE	-75%	-83%	-100%	na	na	-89%	na	-100%	-100%	-100%	na	-100%

All data provided from NIBRS by Jonathan Day, Dayton Police Department Crime Analysis Unit, as of 1/4/2008

CRIME STATS FOR SECTOR 232

	QTR	Assault Offenses	Burglary/ Breaking & Entering	Destruction/ Damage/ Vandalism	Drug/ Narcotic Offenses	Homicide/ Offenses	Larceny/ Theft Offenses	Motor Vehicle Theft	Prostitution Offenses	Robbery	Sex Offenses (Forcible)	Sex Offenses (Non-Forcible)	Stolen Property Offenses
2004	1st	0	0	2	2	0	6	2	2	1	0	0	0
2004	2nd	0	1	2	0	0	2	3	0	1	0	0	0
2004	3rd	0	2	4	2	0	6	1	0	1	1	0	0
2004	4th	4	2	1	1	0	3	2	0	0	0	0	0
2005	1st	1	1	2	0	0	2	3	0	1	0	0	0
2005	2nd	3	3	2	1	0	6	3	2	0	0	0	0
2005	3rd	3	3	7	1	0	13	3	5	1	0	0	1
2005	4th	1	1	1	4	0	4	0	0	0	0	0	1
2006	1st	0	2	0	0	0	4	1	0	2	0	0	1
2006	2nd	2	0	0	0	0	3	2	0	0	0	0	0
2006	3rd	4	2	2	3	0	3	1	0	0	1	0	2
2006	4th	0	2	4	3	0	7	5	0	1	0	0	2
2007	1st	4	0	3	8	0	3	3	0	0	0	0	3
2007	2nd	3	3	1	2	0	1	0	0	0	0	0	2
2007	3rd	0	1	2	4	0	1	1	0	0	0	0	0
2007	4th	2	1	1	5	0	3	0	0	0	0	0	4
2008	1st	2	1	0	1	0	3	0	0	1	0	2	0
2008	2nd												
2008	3rd												
2008	4th												

ANNUAL SUMMARY FOR SECTOR 232

	Assault Offenses	Burglary/ Breaking & Entering	Destruction/ Damage/ Vandalism	Drug/ Narcotic Offenses	Homicide/ Offenses	Larceny/ Theft Offenses	Motor Vehicle Theft	Prostitution Offenses	Robbery	Sex Offenses (Forcible)	Sex Offenses (Non-Forcible)	Stolen Property Offenses
2004 TOTALS	4	5	9	5	0	17	8	2	3	1	0	0
2005 TOTALS	8	8	12	6	0	25	9	7	2	0	0	2
% CHANGE	100%	60%	33%	20%	na	47%	13%	250%	-33%	-100%	na	na
2006 TOTALS	6	6	6	6	0	17	9	0	3	1	0	5
% CHANGE	-25%	-25%	-50%	0%	na	-32%	0%	-100%	50%	na	na	150%
2007 TOTALS	9	5	7	19	0	8	4	0	0	0	0	9
% CHANGE	50%	-17%	17%	217%	na	-53%	-56%	na	-100%	-100%	na	80%
2008 TOTALS	2	1	0	1	0	3	0	0	1	0	2	0
% CHANGE	-78%	-80%	-100%	-95%	na	-63%	-100%	na	na	na	na	-100%

All data provided from NIBRS by Jonathan Day, Dayton Police Department Crime Analysis Unit, as of 1/4/2008

CRIME STATS FOR SECTOR 234

	QTR	Assault Offenses	Burglary/ Breaking & Entering	Destruction/ Damage/ Vandalism	Drug/ Narcotic Offenses	Homicide/ Offenses	Larceny/ Theft Offenses	Motor Vehicle Theft	Prostitution Offenses	Robbery	Sex Offenses (Forcible)	Sex Offenses (Non-Forcible)	Stolen Property Offenses
2004	1st	6	4	5	2	0	8	2	5	1	2	0	0
2004	2nd	18	7	8	5	0	8	4	4	2	0	0	2
2004	3rd	14	12	9	9	0	8	3	3	2	1	0	0
2004	4th	12	11	8	6	0	16	3	2	6	0	0	1
2005	1st	10	4	5	4	0	9	4	16	1	0	0	2
2005	2nd	6	3	1	2	0	4	2	4	1	0	0	0
2005	3rd	10	4	8	1	0	11	4	2	1	0	0	1
2005	4th	10	4	4	2	0	7	2	2	4	1	0	1
2006	1st	7	6	6	3	1	17	3	6	1	0	0	1
2006	2nd	15	1	7	10	0	12	5	4	0	0	0	0
2006	3rd	14	9	4	4	0	10	2	4	0	0	0	1
2006	4th	7	5	7	10	0	20	4	7	5	0	0	0
2007	1st	4	10	3	6	0	13	4	4	1	0	0	0
2007	2nd	3	3	1	2	0	1	0	0	0	0	0	2
2007	3rd	15	6	4	5	0	22	2	2	4	1	0	1
2007	4th	14	4	2	3	0	22	0	0	0	0	0	0
2008	1st	14	2	2	8	0	13	3	1	1	0	0	0
2008	2nd												
2008	3rd												
2008	4th												

ANNUAL SUMMARY FOR SECTOR 234

	Assault Offenses	Burglary/ Breaking & Entering	Destruction/ Damage/ Vandalism	Drug/ Narcotic Offenses	Homicide/ Offenses	Larceny/ Theft Offenses	Motor Vehicle Theft	Prostitution Offenses	Robbery	Sex Offenses (Forcible)	Sex Offenses (Non-Forcible)	Stolen Property Offenses
2004 TOTALS	50	34	30	22	0	40	12	14	11	3	0	3
2005 TOTALS	36	15	18	9	0	31	12	24	7	1	0	4
% CHANGE	-28%	-56%	-40%	-59%	na	-23%	0%	71%	-36%	-67%	na	33%
2006 TOTALS	43	21	24	27	1	59	14	21	6	0	0	2
% CHANGE	19%	40%	33%	200%	na	90%	17%	-13%	-14%	-100%	na	-50%
2007 TOTALS	36	23	10	16	0	58	6	6	5	1	0	3
% CHANGE	-16%	10%	-58%	-41%	-100%	-2%	-57%	-71%	-17%	na	na	50%
2008 TOTALS	14	2	2	8	0	13	3	1	1	0	0	0
% CHANGE	-61%	-91%	-80%	-50%	na	-78%	-50%	-83%	-80%	-100%	na	-100%

All data provided from NIBRS by Jonathan Day, Dayton Police Department Crime Analysis Unit, as of 1/4/2008

CRIME STATS FOR SECTOR 236

	QTR	Assault Offenses	Burglary/ Breaking & Entering	Destruction/ Damage/ Vandalism	Drug/ Narcotic Offenses	Homicide/ Offenses	Larceny/ Theft Offenses	Motor Vehicle Theft	Prostitution Offenses	Robbery	Sex Offenses (Forcible)	Sex Offenses (Non-Forcible)	Stolen Property Offenses
2004	1st	6	1	2	1	0	6	1	0	0	0	0	0
2004	2nd	2	5	3	0	0	3	0	0	0	0	0	0
2004	3rd	3	6	5	1	0	12	4	4	0	1	0	1
2004	4th	2	5	3	1	0	12	1	2	0	1	0	0
2005	1st	2	2	5	1	0	6	2	0	0	1	0	0
2005	2nd	4	8	2	4	0	6	2	2	0	0	0	1
2005	3rd	8	2	1	1	0	8	2	0	1	0	0	1
2005	4th	0	2	5	4	0	0	1	5	0	1	0	1
2006	1st	3	4	3	0	0	8	0	2	0	0	0	0
2006	2nd	3	2	1	2	0	6	2	0	0	1	0	1
2006	3rd	7	6	3	4	0	7	2	7	0	1	0	0
2006	4th	5	1	1	3	0	7	4	0	2	0	0	1
2007	1st	2	1	1	4	0	3	2	0	1	0	0	1
2007	2nd	1	1	0	2	0	2	3	6	0	0	0	0
2007	3rd	3	1	3	2	0	6	3	2	0	0	0	0
2007	4th	4	2	0	0	0	2	3	0	0	0	0	0
2008	1st	1	2	1	0	0	6	1	2	1	0	0	0
2008	2nd												
2008	3rd												
2008	4th												

ANNUAL SUMMARY FOR SECTOR 236

	Assault Offenses	Burglary/ Breaking & Entering	Destruction/ Damage/ Vandalism	Drug/ Narcotic Offenses	Homicide/ Offenses	Larceny/ Theft Offenses	Motor Vehicle Theft	Prostitution Offenses	Robbery	Sex Offenses (Forcible)	Sex Offenses (Non-Forcible)	Stolen Property Offenses
2004 TOTALS	13	17	13	3	0	33	6	6	0	2	0	1
2005 TOTALS	14	14	13	10	0	20	7	7	1	2	0	3
% CHANGE	8%	-18%	0%	233%	na	-39%	17%	17%	na	0%	na	200%
2006 TOTALS	18	13	8	9	0	28	8	9	2	2	0	2
% CHANGE	29%	-7%	-38%	-10%	na	40%	14%	29%	100%	0%	na	-33%
2007 TOTALS	10	5	4	8	0	13	11	8	1	0	0	1
% CHANGE	-44%	-62%	-50%	-11%	na	-54%	38%	-11%	-50%	-100%	na	-50%
2008 TOTALS	1	2	1	0	0	6	1	2	1	0	0	0
% CHANGE	-90%	-60%	-75%	-100%	na	-54%	-91%	-75%	0%	na	na	-100%

All data provided from NIBRS by Jonathan Day, Dayton Police Department Crime Analysis Unit, as of 1/4/2008

CRIME STATS FOR SECTOR 238

	QTR	Assault Offenses	Burglary/ Breaking & Entering	Destruction/ Damage/ Vandalism	Drug/ Narcotic Offenses	Homicide/ Offenses	Larceny/ Theft Offenses	Motor Vehicle Theft	Prostitution Offenses	Robbery	Sex Offenses (Forcible)	Sex Offenses (Non-Forcible)	Stolen Property Offenses
2004	1st	10	2	1	7	0	10	3	7	2	0	0	0
2004	2nd	25	4	8	3	0	11	1	8	1	1	0	1
2004	3rd	9	4	10	8	0	10	4	10	0	0	0	0
2004	4th	21	5	6	10	0	7	4	6	2	0	0	0
2005	1st	17	5	9	6	0	10	5	14	1	1	0	0
2005	2nd	15	8	2	7	0	9	1	20	0	0	0	2
2005	3rd	20	1	11	4	0	11	3	16	0	1	0	1
2005	4th	9	6	4	3	0	14	3	2	0	0	0	0
2006	1st	12	7	10	1	0	11	2	4	1	0	0	2
2006	2nd	12	4	6	9	0	16	3	4	1	0	0	1
2006	3rd	21	5	6	9	0	13	0	13	1	0	0	0
2006	4th	8	14	9	6	0	10	6	12	1	1	0	0
2007	1st	14	9	4	9	0	9	1	10	1	0	0	1
2007	2nd	16	8	4	4	0	8	1	0	0	0	0	0
2007	3rd	19	8	5	8	0	10	4	3	1	1	0	0
2007	4th	7	7	12	2	0	15	0	4	0	2	0	1
2008	1st	11	5	2	8	0	13	2	8	0	0	0	0
2008	2nd												
2008	3rd												
2008	4th												

ANNUAL SUMMARY FOR SECTOR 238

	Assault Offenses	Burglary/ Breaking & Entering	Destruction/ Damage/ Vandalism	Drug/ Narcotic Offenses	Homicide/ Offenses	Larceny/ Theft Offenses	Motor Vehicle Theft	Prostitution Offenses	Robbery	Sex Offenses (Forcible)	Sex Offenses (Non-Forcible)	Stolen Property Offenses
2004 TOTALS	65	15	25	28	0	38	12	31	5	1	0	1
2005 TOTALS	61	20	26	20	0	44	12	52	1	2	0	3
% CHANGE	-6%	33%	4%	-29%	na	16%	0%	68%	-80%	100%	na	200%
2006 TOTALS	53	30	31	25	0	50	11	33	4	1	0	3
% CHANGE	-13%	50%	19%	25%	na	14%	-8%	-37%	300%	-50%	na	0%
2007 TOTALS	56	32	25	23	0	42	6	17	2	3	0	2
% CHANGE	6%	7%	-19%	-8%	na	-16%	-45%	-48%	-50%	200%	na	-33%
2008 TOTALS	11	5	2	8	0	13	2	8	0	0	0	0
% CHANGE	-80%	-84%	-92%	-65%	na	-69%	-67%	-53%	-100%	-100%	na	-100%

All data provided from NIBRS by Jonathan Day, Dayton Police Department Crime Analysis Unit, as of 1/4/2008

CRIME STATS FOR SECTOR 240

	QTR	Assault Offenses	Burglary/ Breaking & Entering	Destruction/ Damage/ Vandalism	Drug/ Narcotic Offenses	Homicide/ Offenses	Larceny/ Theft Offenses	Motor Vehicle Theft	Prostitution Offenses	Robbery	Sex Offenses (Forcible)	Sex Offenses (Non-Forcible)	Stolen Property Offenses
2004	1st	11	5	2	2	0	8	0	2	0	0	0	0
2004	2nd	19	3	6	2	0	9	3	9	0	0	0	0
2004	3rd	10	6	7	2	0	19	4	2	3	1	0	0
2004	4th	5	14	7	1	0	18	5	8	0	0	0	0
2005	1st	7	5	4	5	0	19	2	6	4	0	0	2
2005	2nd	13	14	13	5	0	19	3	10	3	0	0	1
2005	3rd	15	2	8	4	0	17	2	6	1	0	0	1
2005	4th	6	8	4	3	0	17	3	5	1	0	0	1
2006	1st	11	8	15	11	0	13	7	2	1	0	0	0
2006	2nd	10	9	10	3	0	17	5	4	3	0	0	0
2006	3rd	15	6	6	3	1	9	4	5	4	0	0	2
2006	4th	11	12	4	6	0	15	2	2	4	0	0	0
2007	1st	17	8	5	0	0	13	5	4	3	0	0	1
2007	2nd	4	11	5	1	0	13	2	0	2	0	0	0
2007	3rd	5	6	14	4	0	14	6	2	2	0	0	0
2007	4th	7	2	4	1	0	19	2	2	2	0	0	1
2008	1st	5	2	4	2	0	10	2	2	0	0	0	0
2008	2nd												
2008	3rd												
2008	4th												

ANNUAL SUMMARY FOR SECTOR 240

	Assault Offenses	Burglary/ Breaking & Entering	Destruction/ Damage/ Vandalism	Drug/ Narcotic Offenses	Homicide/ Offenses	Larceny/ Theft Offenses	Motor Vehicle Theft	Prostitution Offenses	Robbery	Sex Offenses (Forcible)	Sex Offenses (Non-Forcible)	Stolen Property Offenses
2004 TOTALS	45	28	22	7	0	54	12	21	3	1	0	0
2005 TOTALS	41	29	29	17	0	72	10	27	9	0	0	5
% CHANGE	-9%	4%	32%	143%	na	33%	-17%	29%	200%	-100%	na	na
2006 TOTALS	47	35	35	23	1	54	18	13	12	0	0	2
% CHANGE	15%	21%	21%	35%	na	-25%	80%	-52%	33%	na	na	-60%
2007 TOTALS	33	27	28	6	0	59	15	8	9	0	0	2
% CHANGE	-30%	-23%	-20%	-74%	-100%	9%	-17%	-38%	-25%	na	na	0%
2008 TOTALS	5	2	4	2	0	10	2	2	0	0	0	0
% CHANGE	-85%	-93%	-86%	-67%	na	-83%	-87%	-75%	-100%	na	na	-100%

All data provided from NIBRS by Jonathan Day, Dayton Police Department Crime Analysis Unit, as of 1/4/2008

CRIME STATS FOR SECTOR 242

	QTR	Assault Offenses	Burglary/ Breaking & Entering	Destruction/ Damage/ Vandalism	Drug/ Narcotic Offenses	Homicide/ Offenses	Larceny/ Theft Offenses	Motor Vehicle Theft	Prostitution Offenses	Robbery	Sex Offenses (Forcible)	Sex Offenses (Non-Forcible)	Stolen Property Offenses
2004	1st	0	2	2	2	0	8	2	4	1	0	0	0
2004	2nd	4	2	13	0	0	11	3	2	1	1	0	1
2004	3rd	12	11	10	0	0	11	3	4	3	0	0	1
2004	4th	16	12	12	3	0	20	3	2	2	0	0	0
2005	1st	7	6	4	5	0	11	5	8	1	0	0	0
2005	2nd	3	12	7	3	0	15	2	3	1	0	0	1
2005	3rd	13	8	12	2	0	12	1	0	2	0	0	1
2005	4th	9	7	1	2	0	10	5	5	1	1	0	0
2006	1st	3	11	3	6	0	7	2	4	0	1	0	0
2006	2nd	12	7	5	4	0	9	2	4	2	0	0	0
2006	3rd	5	9	3	11	0	11	0	2	1	0	0	0
2006	4th	8	2	5	1	0	14	4	5	0	0	0	0
2007	1st	6	5	2	2	0	15	2	4	1	0	0	0
2007	2nd	4	7	5	1	0	18	0	0	0	0	0	0
2007	3rd	5	4	3	2	0	19	4	2	2	1	0	0
2007	4th	2	7	3	6	0	4	3	3	2	0	0	1
2008	1st	1	5	3	4	0	6	1	0	0	0	1	1
2008	2nd												
2008	3rd												
2008	4th												

ANNUAL SUMMARY FOR SECTOR 242

	Assault Offenses	Burglary/ Breaking & Entering	Destruction/ Damage/ Vandalism	Drug/ Narcotic Offenses	Homicide/ Offenses	Larceny/ Theft Offenses	Motor Vehicle Theft	Prostitution Offenses	Robbery	Sex Offenses (Forcible)	Sex Offenses (Non-Forcible)	Stolen Property Offenses
2004 TOTALS	32	27	37	5	0	50	11	12	7	1	0	2
2005 TOTALS	32	33	24	12	0	48	13	16	5	1	0	2
% CHANGE	0%	22%	-35%	140%	na	-4%	18%	33%	-29%	0%	na	0%
2006 TOTALS	28	29	16	22	0	41	8	15	3	1	0	0
% CHANGE	-13%	-12%	-33%	83%	na	-15%	-38%	-6%	-40%	0%	na	-100%
2007 TOTALS	17	23	13	11	0	56	9	9	5	1	0	1
% CHANGE	-39%	-21%	-19%	-50%	na	37%	13%	-40%	67%	0%	na	na
2008 TOTALS	1	5	3	4	0	6	1	0	0	0	1	1
% CHANGE	-94%	-78%	-77%	-64%	na	-89%	-89%	-100%	-100%	-100%	na	0%

All data provided from NIBRS by Jonathan Day, Dayton Police Department Crime Analysis Unit, as of 1/4/2008

CRIME STATS FOR SECTOR 243

	<u>QTR</u>	<u>Assault Offenses</u>	<u>Burglary/ Breaking & Entering</u>	<u>Destruction/ Damage/ Vandalism</u>	<u>Drug/ Narcotic Offenses</u>	<u>Homicide/ Offenses</u>	<u>Larceny/ Theft Offenses</u>	<u>Motor Vehicle Theft</u>	<u>Prostitution Offenses</u>	<u>Robbery</u>	<u>Sex Offenses (Forcible)</u>	<u>Sex Offenses (Non-Forcible)</u>	<u>Stolen Property Offenses</u>
2004	1st	13	4	5	9	0	7	3	4	0	0	1	3
2004	2nd	7	5	3	4	0	11	2	10	1	0	0	0
2004	3rd	17	1	4	5	0	9	4	4	3	0	0	2
2004	4th	8	2	9	5	0	7	4	14	1	0	0	2
2005	1st	9	2	8	1	0	10	5	16	3	0	0	0
2005	2nd	16	1	1	6	0	2	0	16	1	1	0	1
2005	3rd	8	5	6	7	0	7	5	21	0	0	0	1
2005	4th	8	9	6	1	0	7	5	10	2	0	0	0
2006	1st	7	9	7	8	0	10	2	7	0	1	0	0
2006	2nd	14	2	2	8	0	11	4	2	2	1	0	0
2006	3rd	5	9	6	1	0	12	4	16	2	1	0	0
2006	4th	8	4	3	4	0	10	5	8	1	0	0	0
2007	1st	6	4	6	10	0	11	3	25	1	0	0	0
2007	2nd	16	3	5	7	0	14	0	27	1	0	0	0
2007	3rd	19	5	7	4	0	5	2	4	1	1	0	0
2007	4th	9	2	3	6	0	5	0	13	1	1	0	1
2008	1st	7	1	3	4	0	5	0	11	0	0	0	1
2008	2nd												
2008	3rd												
2008	4th												

ANNUAL SUMMARY FOR SECTOR 243

	<u>Assault Offenses</u>	<u>Burglary/ Breaking & Entering</u>	<u>Destruction/ Damage/ Vandalism</u>	<u>Drug/ Narcotic Offenses</u>	<u>Homicide/ Offenses</u>	<u>Larceny/ Theft Offenses</u>	<u>Motor Vehicle Theft</u>	<u>Prostitution Offenses</u>	<u>Robbery</u>	<u>Sex Offenses (Forcible)</u>	<u>Sex Offenses (Non-Forcible)</u>	<u>Stolen Property Offenses</u>
2004 TOTALS	45	12	21	23	0	34	13	32	5	0	1	7
2005 TOTALS	41	17	21	15	0	26	15	63	6	1	0	2
% CHANGE	-9%	42%	0%	-35%	na	-24%	15%	97%	20%	na	-100%	-71%
2006 TOTALS	34	24	18	21	0	43	15	33	5	3	0	0
% CHANGE	-17%	41%	-14%	40%	na	65%	0%	-48%	-17%	200%	na	-100%
2007 TOTALS	50	14	21	27	0	35	5	69	4	2	0	1
% CHANGE	47%	-42%	17%	29%	na	-19%	-67%	109%	-20%	-33%	na	na
2008 TOTALS	7	1	3	4	0	5	0	11	0	0	0	1
% CHANGE	-86%	-93%	-86%	-85%	na	-86%	-100%	-84%	-100%	-100%	na	0%

All data provided from NIBRS by Jonathan Day, Dayton Police Department Crime Analysis Unit, as of 1/4/2008

CRIME STATS FOR SECTOR 248

	QTR	Assault Offenses	Burglary/ Breaking & Entering	Destruction/ Damage/ Vandalism	Drug/ Narcotic Offenses	Homicide/ Offenses	Larceny/ Theft Offenses	Motor Vehicle Theft	Prostitution Offenses	Robbery	Sex Offenses (Forcible)	Sex Offenses (Non-Forcible)	Stolen Property Offenses
2004	1st	12	9	3	8	0	18	4	4	3	1	0	1
2004	2nd	22	16	18	2	0	31	5	11	3	2	0	1
2004	3rd	34	16	11	9	0	19	14	9	1	2	0	1
2004	4th	18	15	19	2	0	24	5	6	0	0	0	2
2005	1st	21	13	9	7	0	13	7	8	2	0	0	2
2005	2nd	22	16	13	8	0	22	13	12	3	0	0	0
2005	3rd	42	16	12	0	0	25	6	2	2	2	0	1
2005	4th	20	7	9	8	0	20	6	0	0	2	0	1
2006	1st	28	12	13	5	0	25	14	4	4	4	0	1
2006	2nd	28	9	8	9	0	21	5	0	1	3	0	1
2006	3rd	22	13	12	3	0	18	12	2	3	2	0	3
2006	4th	18	7	14	8	0	23	11	2	2	2	0	2
2007	1st	16	11	11	6	0	17	5	0	1	0	0	0
2007	2nd	20	7	1	8	0	15	7	0	1	0	0	1
2007	3rd	14	11	6	8	0	15	6	0	2	1	0	0
2007	4th	29	8	9	11	0	12	3	4	3	1	0	0
2008	1st	23	13	17	7	0	11	1	0	4	2	0	1
2008	2nd												
2008	3rd												
2008	4th												

ANNUAL SUMMARY FOR SECTOR 248

	Assault Offenses	Burglary/ Breaking & Entering	Destruction/ Damage/ Vandalism	Drug/ Narcotic Offenses	Homicide/ Offenses	Larceny/ Theft Offenses	Motor Vehicle Theft	Prostitution Offenses	Robbery	Sex Offenses (Forcible)	Sex Offenses (Non-Forcible)	Stolen Property Offenses
2004 TOTALS	86	56	51	21	0	92	28	30	7	5	0	5
2005 TOTALS	105	52	43	23	0	80	32	22	7	4	0	4
% CHANGE	22%	-7%	-16%	10%	na	-13%	14%	-27%	0%	-20%	na	-20%
2006 TOTALS	96	41	47	25	0	87	42	8	10	11	0	7
% CHANGE	-9%	-21%	9%	9%	na	9%	31%	-64%	43%	175%	na	75%
2007 TOTALS	79	37	27	33	0	59	21	4	7	2	0	1
% CHANGE	-18%	-10%	-43%	32%	na	-32%	-50%	-50%	-30%	-82%	na	-86%
2008 TOTALS	23	13	17	7	0	11	1	0	4	2	0	1
% CHANGE	-71%	-65%	-37%	-79%	na	-81%	-95%	-100%	-43%	0%	na	0%

All data provided from NIBRS by Jonathan Day, Dayton Police Department Crime Analysis Unit, as of 1/4/2008

CRIME STATS FOR SECTOR 260

	QTR	Assault Offenses	Burglary/ Breaking & Entering	Destruction/ Damage/ Vandalism	Drug/ Narcotic Offenses	Homicide/ Offenses	Larceny/ Theft Offenses	Motor Vehicle Theft	Prostitution Offenses	Robbery	Sex Offenses (Forcible)	Sex Offenses (Non-Forcible)	Stolen Property Offenses
2004	1st	12	1	4	3	0	4	4	0	0	0	0	0
2004	2nd	17	5	6	0	0	13	0	0	0	0	0	0
2004	3rd	12	2	4	1	0	7	2	2	0	0	0	1
2004	4th	4	4	6	3	0	12	3	0	0	0	0	0
2005	1st	4	5	0	0	0	4	2	0	0	0	0	0
2005	2nd	3	1	1	1	0	8	0	2	0	0	0	0
2005	3rd	8	3	2	2	0	6	2	0	0	0	0	0
2005	4th	4	9	1	1	0	5	4	0	0	0	0	0
2006	1st	1	4	2	2	0	6	1	0	0	0	0	0
2006	2nd	1	1	4	2	0	3	1	0	0	0	0	1
2006	3rd	4	10	3	1	0	6	3	0	2	0	0	0
2006	4th	3	3	2	1	0	4	0	0	2	0	0	1
2007	1st	11	3	1	0	0	2	2	0	0	0	0	0
2007	2nd	3	7	3	3	0	5	0	0	0	0	0	0
2007	3rd	7	3	3	1	0	10	2	0	0	0	0	1
2007	4th	5	0	2	0	0	5	1	1	0	0	0	0
2008	1st	8	2	1	4	0	2	0	0	0	0	0	0
2008	2nd												
2008	3rd												
2008	4th												

ANNUAL SUMMARY FOR SECTOR 260

	Assault Offenses	Burglary/ Breaking & Entering	Destruction/ Damage/ Vandalism	Drug/ Narcotic Offenses	Homicide/ Offenses	Larceny/ Theft Offenses	Motor Vehicle Theft	Prostitution Offenses	Robbery	Sex Offenses (Forcible)	Sex Offenses (Non-Forcible)	Stolen Property Offenses
2004 TOTALS	45	12	20	7	0	36	9	2	0	0	0	1
2005 TOTALS	19	18	4	4	0	23	8	2	0	0	0	0
% CHANGE	-58%	50%	-80%	-43%	na	-36%	-11%	0%	na	na	na	-100%
2006 TOTALS	9	18	11	6	0	19	5	0	4	0	0	2
% CHANGE	-53%	0%	175%	50%	na	-17%	-38%	-100%	na	na	na	na
2007 TOTALS	26	13	9	4	0	22	5	1	0	0	0	1
% CHANGE	189%	-28%	-18%	-33%	na	16%	0%	na	-100%	na	na	-50%
2008 TOTALS	8	2	1	4	0	2	0	0	0	0	0	0
% CHANGE	-69%	-85%	-89%	0%	na	-91%	-100%	-100%	na	na	na	-100%

All data provided from NIBRS by Jonathan Day, Dayton Police Department Crime Analysis Unit, as of 1/4/2008

CRIME STATS FOR SECTOR 262

	QTR	Assault Offenses	Burglary/ Breaking & Entering	Destruction/ Damage/ Vandalism	Drug/ Narcotic Offenses	Homicide/ Offenses	Larceny/ Theft Offenses	Motor Vehicle Theft	Prostitution Offenses	Robbery	Sex Offenses (Forcible)	Sex Offenses (Non-Forcible)	Stolen Property Offenses
2004	1st	8	14	6	10	0	2	7	2	1	1	0	0
2004	2nd	16	3	6	6	0	13	3	4	1	1	2	0
2004	3rd	15	2	6	7	0	18	3	6	3	0	0	2
2004	4th	12	5	10	7	0	15	6	6	1	0	1	1
2005	1st	7	1	6	2	0	10	6	4	1	0	0	0
2005	2nd	14	8	6	1	0	12	1	0	2	0	0	1
2005	3rd	17	6	0	3	0	13	5	2	3	1	0	1
2005	4th	15	4	7	8	0	10	5	0	1	4	0	2
2006	1st	17	5	6	10	0	11	5	0	2	1	0	0
2006	2nd	8	8	5	6	0	12	6	5	1	0	0	0
2006	3rd	10	10	10	2	0	13	5	0	0	0	0	4
2006	4th	12	8	5	11	0	14	4	7	2	0	0	0
2007	1st	5	4	5	2	0	14	3	2	1	0	0	1
2007	2nd	6	13	5	3	0	8	2	0	1	1	0	1
2007	3rd	19	5	6	3	0	7	1	4	0	1	0	0
2007	4th	8	3	7	15	0	10	1	2	2	1	0	2
2008	1st	8	11	2	5	0	6	3	4	0	1	0	1
2008	2nd												
2008	3rd												
2008	4th												

ANNUAL SUMMARY FOR SECTOR 262

	Assault Offenses	Burglary/ Breaking & Entering	Destruction/ Damage/ Vandalism	Drug/ Narcotic Offenses	Homicide/ Offenses	Larceny/ Theft Offenses	Motor Vehicle Theft	Prostitution Offenses	Robbery	Sex Offenses (Forcible)	Sex Offenses (Non-Forcible)	Stolen Property Offenses
2004 TOTALS	51	24	28	30	0	48	19	18	6	2	3	3
2005 TOTALS	53	19	19	14	0	45	17	6	7	5	0	4
% CHANGE	4%	-21%	-32%	-53%	na	-6%	-11%	-67%	17%	150%	-100%	33%
2006 TOTALS	47	31	26	29	0	50	20	12	5	1	0	4
% CHANGE	-11%	63%	37%	107%	na	11%	18%	100%	-29%	-80%	na	0%
2007 TOTALS	38	25	23	23	0	39	7	8	4	3	0	4
% CHANGE	-19%	-19%	-12%	-21%	na	-22%	-65%	-33%	-20%	200%	na	0%
2008 TOTALS	8	11	2	5	0	6	3	4	0	1	0	1
% CHANGE	-79%	-56%	-91%	-78%	na	-85%	-57%	-50%	-100%	-67%	na	-75%

All data provided from NIBRS by Jonathan Day, Dayton Police Department Crime Analysis Unit, as of 1/4/2008

CRIME STATS FOR SECTOR 264

	<u>QTR</u>	<u>Assault Offenses</u>	<u>Burglary/ Breaking & Entering</u>	<u>Destruction/ Damage/ Vandalism</u>	<u>Drug/ Narcotic Offenses</u>	<u>Homicide/ Offenses</u>	<u>Larceny/ Theft Offenses</u>	<u>Motor Vehicle Theft</u>	<u>Prostitution Offenses</u>	<u>Robbery</u>	<u>Sex Offenses (Forcible)</u>	<u>Sex Offenses (Non-Forcible)</u>	<u>Stolen Property Offenses</u>
2004	1st	21	11	7	9	0	8	2	0	1	0	0	0
2004	2nd	34	15	14	14	0	18	1	0	0	0	0	0
2004	3rd	28	13	14	16	0	16	3	0	8	4	1	0
2004	4th	27	3	11	12	0	6	5	2	0	0	0	0
2005	1st	7	4	2	2	0	10	0	0	1	0	0	0
2005	2nd	25	9	7	16	0	9	5	0	2	0	0	2
2005	3rd	25	10	2	7	0	11	2	0	3	2	0	0
2005	4th	12	8	4	8	0	9	4	0	1	0	0	0
2006	1st	21	11	8	9	0	13	4	0	1	1	0	2
2006	2nd	17	24	8	8	0	8	5	0	0	0	0	1
2006	3rd	24	5	10	2	0	14	4	0	0	3	0	1
2006	4th	16	7	4	3	0	14	5	0	1	2	0	0
2007	1st	6	6	5	5	0	4	2	4	1	0	0	0
2007	2nd	12	8	10	2	0	9	1	0	0	1	0	5
2007	3rd	19	13	7	5	0	10	4	0	2	3	0	1
2007	4th	21	9	10	2	0	24	4	2	0	0	0	0
2008	1st	13	9	4	10	0	8	2	0	0	0	1	0
2008	2nd												
2008	3rd												
2008	4th												

ANNUAL SUMMARY FOR SECTOR 264

	<u>Assault Offenses</u>	<u>Burglary/ Breaking & Entering</u>	<u>Destruction/ Damage/ Vandalism</u>	<u>Drug/ Narcotic Offenses</u>	<u>Homicide/ Offenses</u>	<u>Larceny/ Theft Offenses</u>	<u>Motor Vehicle Theft</u>	<u>Prostitution Offenses</u>	<u>Robbery</u>	<u>Sex Offenses (Forcible)</u>	<u>Sex Offenses (Non-Forcible)</u>	<u>Stolen Property Offenses</u>
2004 TOTALS	110	42	46	51	0	48	11	2	9	4	1	0
2005 TOTALS	69	31	15	33	0	39	11	0	7	2	0	2
% CHANGE	-37%	-26%	-67%	-35%	na	-19%	0%	-100%	-22%	-50%	-100%	na
2006 TOTALS	78	47	30	22	0	49	18	0	2	6	0	4
% CHANGE	13%	52%	100%	-33%	na	26%	64%	na	-71%	200%	na	100%
2007 TOTALS	58	36	32	14	0	47	11	6	3	4	0	6
% CHANGE	-26%	-23%	7%	-36%	na	-4%	-39%	na	50%	-33%	na	50%
2008 TOTALS	13	9	4	10	0	8	2	0	0	0	1	0
% CHANGE	-78%	-75%	-88%	-29%	na	-83%	-82%	-100%	-100%	-100%	na	-100%

All data provided from NIBRS by Jonathan Day, Dayton Police Department Crime Analysis Unit, as of 1/4/2008

CRIME STATS FOR SECTOR 266

	QTR	Assault Offenses	Burglary/ Breaking & Entering	Destruction/ Damage/ Vandalism	Drug/ Narcotic Offenses	Homicide/ Offenses	Larceny/ Theft Offenses	Motor Vehicle Theft	Prostitution Offenses	Robbery	Sex Offenses (Forcible)	Sex Offenses (Non-Forcible)	Stolen Property Offenses
2004	1st	4	0	6	3	0	6	1	0	0	0	0	1
2004	2nd	10	4	6	3	0	12	3	1	2	0	0	0
2004	3rd	9	6	1	7	0	7	3	0	1	0	0	0
2004	4th	9	7	5	6	0	15	3	2	1	0	0	2
2005	1st	9	3	4	1	0	7	2	0	0	1	0	2
2005	2nd	9	3	5	2	0	1	1	0	1	0	0	0
2005	3rd	8	4	3	2	0	15	3	0	2	3	0	0
2005	4th	3	6	1	4	0	3	0	0	0	0	0	0
2006	1st	8	6	10	4	0	7	3	0	0	0	0	2
2006	2nd	8	2	6	3	1	10	1	2	2	0	0	0
2006	3rd	5	2	4	2	0	10	3	0	0	0	0	1
2006	4th	8	3	6	0	0	7	6	0	0	0	0	0
2007	1st	14	2	4	0	0	9	3	0	1	0	0	0
2007	2nd	7	6	3	1	0	7	0	1	0	0	0	0
2007	3rd	7	11	9	1	0	3	0	4	0	0	0	1
2007	4th	6	4	9	4	0	9	1	0	1	2	0	1
2008	1st	6	3	4	4	0	5	3	2	0	0	0	0
2008	2nd												
2008	3rd												
2008	4th												

ANNUAL SUMMARY FOR SECTOR 266

	Assault Offenses	Burglary/ Breaking & Entering	Destruction/ Damage/ Vandalism	Drug/ Narcotic Offenses	Homicide/ Offenses	Larceny/ Theft Offenses	Motor Vehicle Theft	Prostitution Offenses	Robbery	Sex Offenses (Forcible)	Sex Offenses (Non-Forcible)	Stolen Property Offenses
2004 TOTALS	32	17	18	19	0	40	10	3	4	0	0	3
2005 TOTALS	29	16	13	9	0	26	6	0	3	4	0	2
% CHANGE	-9%	-6%	-28%	-53%	na	-35%	-40%	-100%	-25%	na	na	-33%
2006 TOTALS	29	13	26	9	1	34	13	2	2	0	0	3
% CHANGE	0%	-19%	100%	0%	na	31%	117%	na	-33%	-100%	na	50%
2007 TOTALS	34	23	25	6	0	28	4	5	2	2	0	2
% CHANGE	17%	77%	-4%	-33%	-100%	-18%	-69%	150%	0%	na	na	-33%
2008 TOTALS	6	3	4	4	0	5	3	2	0	0	0	0
% CHANGE	-82%	-87%	-84%	-33%	na	-82%	-25%	-60%	-100%	-100%	na	-100%

All data provided from NIBRS by Jonathan Day, Dayton Police Department Crime Analysis Unit, as of 1/4/2008

CRIME STATS FOR SECTOR 268

	QTR	Assault Offenses	Burglary/ Breaking & Entering	Destruction/ Damage/ Vandalism	Drug/ Narcotic Offenses	Homicide/ Offenses	Larceny/ Theft Offenses	Motor Vehicle Theft	Prostitution Offenses	Robbery	Sex Offenses (Forcible)	Sex Offenses (Non-Forcible)	Stolen Property Offenses
2004	1st	11	13	9	28	0	20	7	20	5	0	0	3
2004	2nd	11	20	12	15	0	30	2	24	4	0	0	0
2004	3rd	34	11	25	15	0	31	9	31	2	1	0	3
2004	4th	14	4	17	21	0	24	4	20	4	3	0	1
2005	1st	17	7	9	13	0	21	3	22	2	0	1	1
2005	2nd	49	14	14	17	0	19	5	17	3	4	0	1
2005	3rd	25	19	12	11	0	22	4	14	2	2	0	4
2005	4th	16	11	15	7	0	17	4	19	2	1	0	4
2006	1st	21	10	15	11	0	22	9	4	4	1	0	0
2006	2nd	21	14	13	27	0	22	8	10	0	2	0	1
2006	3rd	26	16	12	15	0	28	7	23	1	0	0	1
2006	4th	22	11	7	22	0	16	6	20	5	0	0	1
2007	1st	16	10	12	7	0	10	3	23	3	1	0	1
2007	2nd	31	10	11	26	0	26	11	16	4	1	0	0
2007	3rd	42	21	22	18	0	17	6	20	6	0	0	0
2007	4th	21	17	19	31	0	19	5	41	3	3	0	2
2008	1st	17	14	7	16	0	16	5	26	3	2	0	2
2008	2nd												
2008	3rd												
2008	4th												

ANNUAL SUMMARY FOR SECTOR 268

	Assault Offenses	Burglary/ Breaking & Entering	Destruction/ Damage/ Vandalism	Drug/ Narcotic Offenses	Homicide/ Offenses	Larceny/ Theft Offenses	Motor Vehicle Theft	Prostitution Offenses	Robbery	Sex Offenses (Forcible)	Sex Offenses (Non-Forcible)	Stolen Property Offenses
2004 TOTALS	70	48	63	79	0	105	22	95	15	4	0	7
2005 TOTALS	107	51	50	48	0	79	16	72	9	7	1	10
% CHANGE	53%	6%	-21%	-39%	na	-25%	-27%	-24%	-40%	75%	na	43%
2006 TOTALS	90	51	47	75	0	88	30	57	10	3	0	3
% CHANGE	-16%	0%	-6%	56%	na	11%	88%	-21%	11%	-57%	-100%	-70%
2007 TOTALS	110	58	64	82	0	72	25	100	16	5	0	3
% CHANGE	22%	14%	36%	9%	na	-18%	-17%	75%	60%	67%	na	0%
2008 TOTALS	17	14	7	16	0	16	5	26	3	2	0	2
% CHANGE	-85%	-76%	-89%	-80%	na	-78%	-80%	-74%	-81%	-60%	na	-33%

All data provided from NIBRS by Jonathan Day, Dayton Police Department Crime Analysis Unit, as of 1/4/2008

CRIME STATS FOR SECTOR 272

	QTR	Assault Offenses	Burglary/ Breaking & Entering	Destruction/ Damage/ Vandalism	Drug/ Narcotic Offenses	Homicide/ Offenses	Larceny/ Theft Offenses	Motor Vehicle Theft	Prostitution Offenses	Robbery	Sex Offenses (Forcible)	Sex Offenses (Non-Forcible)	Stolen Property Offenses
2004	1st	35	15	11	5	0	16	7	2	0	3	0	0
2004	2nd	23	21	23	1	0	19	9	0	4	0	0	1
2004	3rd	36	19	28	5	1	33	17	5	2	1	0	0
2004	4th	31	14	20	6	0	20	20	8	4	0	0	2
2005	1st	20	10	19	3	0	18	14	2	2	1	0	2
2005	2nd	33	19	20	10	0	28	9	0	1	2	0	2
2005	3rd	33	25	16	16	0	23	10	2	2	2	0	2
2005	4th	30	17	10	5	0	21	11	0	3	1	0	0
2006	1st	38	18	22	10	0	26	15	0	1	1	0	2
2006	2nd	38	23	26	35	0	31	13	9	7	1	0	3
2006	3rd	44	26	13	12	0	28	12	0	3	1	0	3
2006	4th	17	15	14	5	0	19	7	2	5	2	0	1
2007	1st	21	9	8	2	0	19	4	3	3	1	0	2
2007	2nd	32	16	14	2	1	29	12	0	1	0	0	2
2007	3rd	33	6	17	10	0	12	8	6	2	0	0	2
2007	4th	35	13	18	15	0	12	3	0	0	0	0	1
2008	1st	29	6	8	10	0	17	3	0	3	1	0	0
2008	2nd												
2008	3rd												
2008	4th												

ANNUAL SUMMARY FOR SECTOR 272

	Assault Offenses	Burglary/ Breaking & Entering	Destruction/ Damage/ Vandalism	Drug/ Narcotic Offenses	Homicide/ Offenses	Larceny/ Theft Offenses	Motor Vehicle Theft	Prostitution Offenses	Robbery	Sex Offenses (Forcible)	Sex Offenses (Non-Forcible)	Stolen Property Offenses
2004 TOTALS	125	69	82	17	1	88	53	15	10	4	0	3
2005 TOTALS	116	71	65	34	0	90	44	4	8	6	0	6
% CHANGE	-7%	3%	-21%	100%	-100%	2%	-17%	-73%	-20%	50%	na	100%
2006 TOTALS	137	82	75	62	0	104	47	11	16	5	0	9
% CHANGE	18%	15%	15%	82%	na	16%	7%	175%	100%	-17%	na	50%
2007 TOTALS	121	44	57	29	1	72	27	9	6	1	0	7
% CHANGE	-12%	-46%	-24%	-53%	na	-31%	-43%	-18%	-63%	-80%	na	-22%
2008 TOTALS	29	6	8	10	0	17	3	0	3	1	0	0
% CHANGE	-76%	-86%	-86%	-66%	-100%	-76%	-89%	-100%	-50%	0%	na	-100%

All data provided from NIBRS by Jonathan Day, Dayton Police Department Crime Analysis Unit, as of 1/4/2008